

Improve
International



KEEPING YOU SAFE, WHILE YOU LEARN

What to expect when you visit
our risk-assessed venues



**STAY
ALERT**

**CONTROL
THE VIRUS**



**SAVE
LIVES**

YOUR SAFETY IS OUR PRIORITY!

Our professional delivery team have ensured that our venues are fully risk-assessed and protected so we can support you in your career development with the much needed CPD to help you continue your learning.

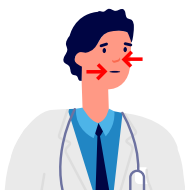
Here's what will happen when you attend one of our venues and what to expect:

Before the course:

- We will send you the Delegate Joining Document at least three days before your arrival, please complete and return the document before the start of the course.
- Let us know if you're showing any symptoms of Covid-19: temperature, sore throat, loss or change in taste, see NHS guidance for a full list of symptoms.



A new, continuous cough



A loss of, or change to, your sense of smell or taste



A high temperature

Arrival at our venues:

- Your temperature will be taken using a non-contact infrared forehead thermometer. This information will be used on the day but will not be stored or recorded, in line with data protection regulations.
- If your temperature is above 38 degrees you won't be able to enter venue and we will review alternative delivery arrangements with you.
- We will record your attendance on your behalf, this will reduce the need for you to touch pens or surfaces unnecessarily.

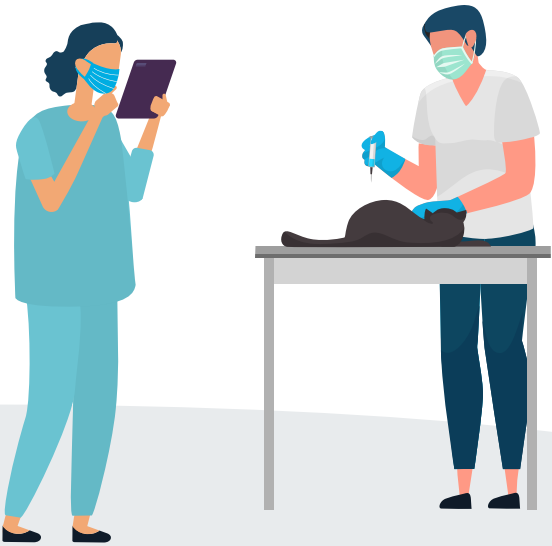


What will happen during the course:

- We will provide you with bottled water and a disposable cup, pen and a note pad. Please do not bring your own items into the facility or use other delegates items.
- Access to handwashing facilities and hand sanitisers are available throughout the building. We encourage you to use these at regular intervals.
- Breaks throughout the day will be staggered.
- There will be a designated two-way system for moving around the facility. Please ensure that you follow the signage at all times.
- Social distancing will be followed with desks appropriately measured so that everyone has the required space
- There will be regular cleaning of lecture rooms, practical rooms and communal areas.

After attending the course or programme:

- Delegate and Speaker Tracking Procedure, if someone on the course develops any symptoms of Covid-19, we will follow Government guidelines with regards to NHS Test and Trace procedure.



Personal Protective Equipment

What we will provide:

Lecture-based course

- Face mask



Practical course

- Disposable theatre gown, gloves, face mask and goggles/visor



CONTACT US

Tel: 01793 759 159

Email: enquiries@improveinternational.com

Web: www.improveinternational.com

.....
Alexandra House
Whittingham Drive
Wroughton
Swindon SN4 0QJ



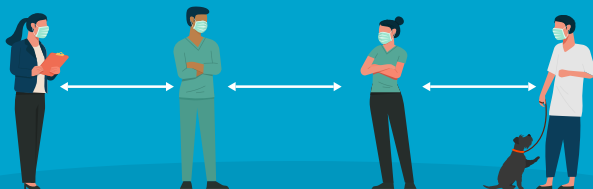
[improve-international](#)



[ImproveCPD](#)



[@improvecpd](#)



How we're keeping you safe!

- Practical training sessions delivered in risk-assessed venues with full PPE.
- Lecture-based sessions delivered via live-stream, if we cannot run attendance sessions.
- New Distance Learning CPD if you prefer to improve@home.